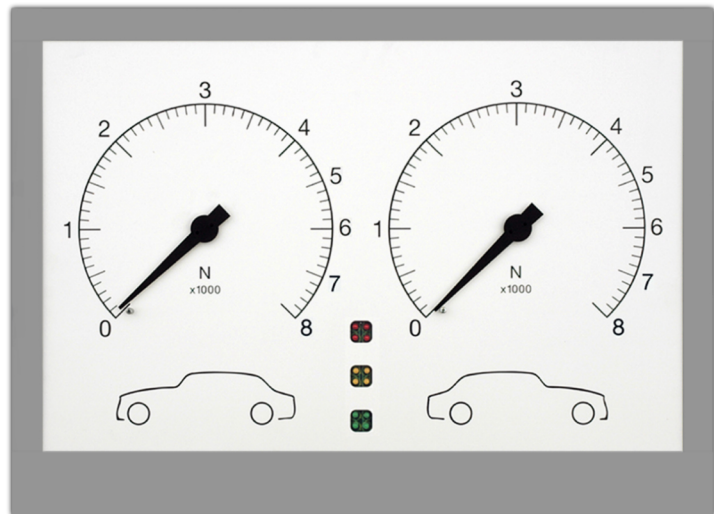


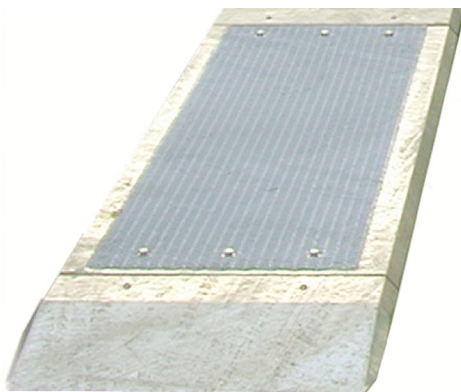
P40-NT2 PLATE BRAKE TESTER

P40 Analogue Display

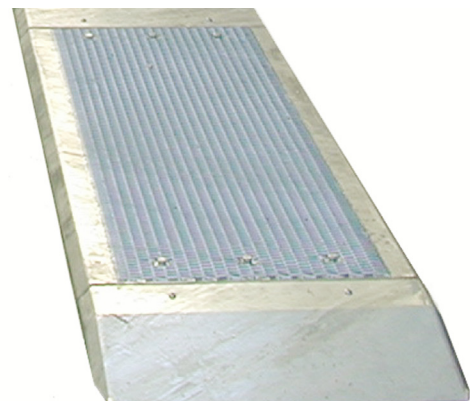
- Brake force indication left / right up to 8 kN
- Lamp indication for brake force difference left / right:
GREEN - **YELLOW** - **RED**
- Microprocessor controlled
- Wall bracket included



Two Plate Brake Tester



Hot dip zinc



Specifications

- Measuring range: 8000 N
- Axle weight: 2 ton (measuring)
- Axle weight: 3 ton (drive over)
- Dimensions plate: 1480 x 620 x 50 mm (L x W x H)
- Dimensions display: 635 x 465 x 165 mm (L x W x H)
- Power supply: 1 phase 230 V / 50 Hz

Technical specifications are subject to changes without notice.

Altesco P40 GB 20200401

ALTESCO, Altus-Escon-Company BV, Drachmeweg 26, NL-2153PA Nieuw Vennepe, The Netherlands.
Phone: +31 (0)88 ALTESCO, +31 (0)88 2583700, www.altus-test.com, sales@altus-test.com.

altesco