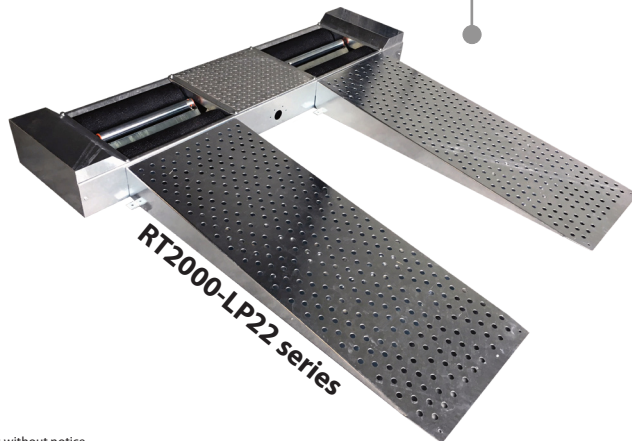
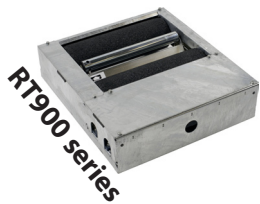
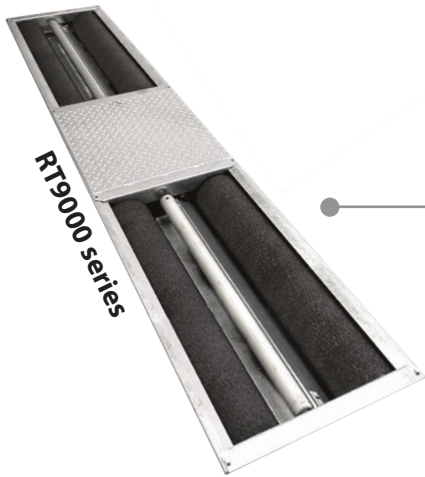
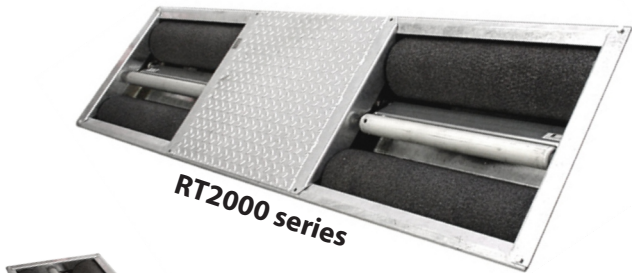


The **BD2060** is the **Comar** analogue display for roller brake testers. Multiple configurations of floor units, peripherals and accessories can be connected to create a test lane for passenger cars and light commercial vehicles exactly adapted to the needs and possibilities in your workshop. The BD2060 is designed in such a way that all electronics are inside the read-out unit. Therefore, no separate relay boxes necessary!



BD2060 standard features

- ☪ Brake difference indication left/right per axle.
- ☪ Memory for storage of test results for service- and parking brake.
- ☪ Wheel lock indication lamps for left and right.
- ☪ Brake efficiency calculation for service- and parking brake after manual weight input or automatic calculation through an optional integrated weighing system.
- ☪ Recalling off all values and brake efficiencies.
- ☪ Ovality & rolling resistance measurement.
- ☪ Fully automatic test program.



Standard supplied

- ☪ Infra-red remote control hand set.
- ☪ 4x4 reversible roller kit.
- ☪ Wall bracket.



Pointers (N)

Brake force scale for the left and right wheel. On the right scale the indication for manual weight input is presented.

Pointer (%)

For the presentation of differences left/right of an axle as well as brake efficiencies for the service brake and parking brake.

Specifications and options at www.comar-test.com

Technical specifications are subject to changes without notice.
Specifications of floor modules, console components and options, available upon request.



Altus-Escon-Company B.V.
Drachmeweg 26
NL-2153PA Nieuw-Vennep
The Netherlands

Certified: ISO 9001
www.comar-test.com
sales@comar-test.com
+31 (0)88 258 37 00

Diagnostic equipment for specialists!

